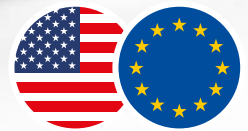
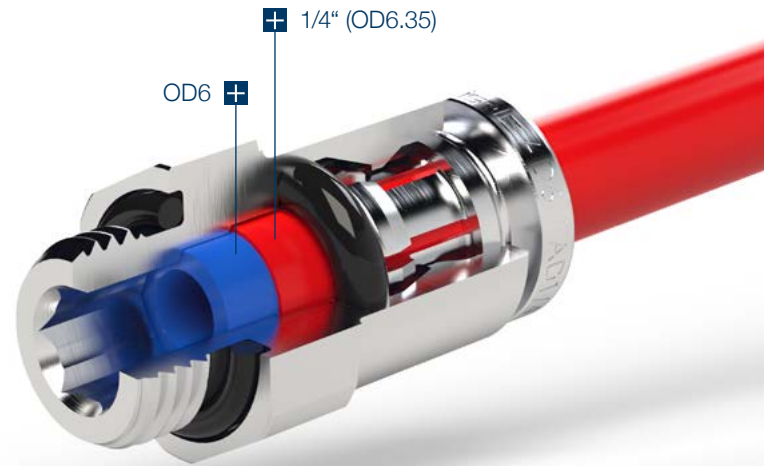


2-IN-1 CONNECTOR

One Connector Two Diameters

Eisele reduces the variety of parts in your warehouse with the new and unique 2-in-1 connector. This connector allows you to connect two different tube diameters using a single connector: Whether a tube with 1/4" OD or metric tube with 6 mm OD, it does not make a difference, the connector remains the same. This connector provides a higher process reliability by eliminating the possibility of a mix up due to country-specific connectors.



Features at a glance

- Tube OD-Ø: 0.24" (6 mm) and 1/4" (6.35 mm)
- Screw in thread: M5, G1/8, G3/8, G1/4
- Working pressure range: -0.95 to 15 bar
- Working temperature range: -20 to +80 °C
- Robust solid nickel-plated brass housing
- Straight, angled and T-shaped versions with inner and outer hexagon
- Suitable for inch and metric tubing
- Recommended tubing: PA, PE
- For air and vacuum applications

Advantages

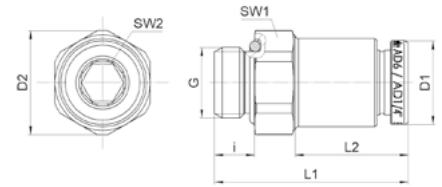
- **High process safety**
 - Eliminate confusion caused by country-specific connectors
 - Avoid customer complaints / issues
- **Less storage space**
 - Decrease in storage costs
- **Higher diameter tolerance**
 - Compensate for oval deformed tubes
- **Optimized mounting process**
 - 5x faster assembly via hexagonal socket using torque allen wrench
- **Reduced connector variety**
 - Less administrative efforts as a result of fewer part numbers and CAD data
 - No more country-specific connectors





Straight Screw-In Connector

- Inner- & outer hexagonal socket
- Whitworth pipe thread
- NBR sealing

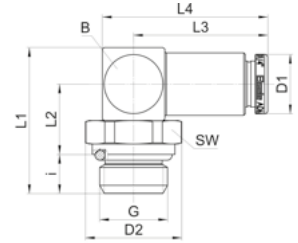


Part no.	G	for tube	SW1	SW2	i	L1	L2	D1	D2	NW	g/piece
828-0266	G1/8	OD6 1/4"	13	5	5.5	26.5	15.5	11.4	14.2	5.2	14



Angled Screw-In Connector

- Outer hexagonal socket
- Whitworth pipe thread
- NBR sealing

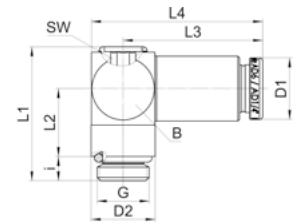


Part no.	G	for tube	SW	i	L1	L2	L3	L4	B	D1	D2	NW	g/piece
886-0466	G1/4	OD6 1/4"	17	7.5	28	13.5	25.6	31.6	14	11.4	18.5	4	44
886-0666	G3/8	OD6 1/4"	20	7.5	29.5	15	25.6	31.6	14	11.4	21.8	4	56



Angled Screw-In Connector

- Inner hexagonal socket
- Whitworth pipe thread or metric
- NBR sealing

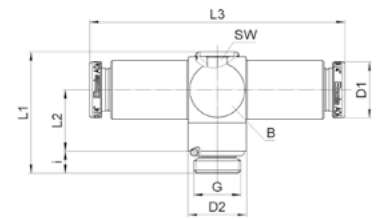


Part no.	G	for tube	SW	i	L1	L2	L3	B	D1	D2	NW	g/piece
856-0266X	G1/8	OD6 1/4"	4	4.5	24.8	12.6	25.9	31.8	13.5	11.4	11.9	4,5
857-5066X	M5	OD6 1/4"	3	3.5	18.8	8.4	25.6	31.8	13	11.4	9.9	2,1



T-Screw-In Connector

- Inner hexagonal socket
- Whitworth pipe thread
- NBR sealing

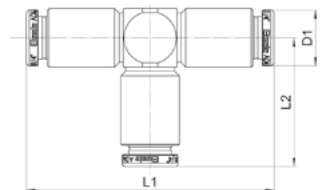


Part no.	G	for tube	SW	i	L1	L2	L3	B	D1	D2	NW	g/piece
858-0266X	G1/8	OD6 1/4"	4	4.5	24.8	12.6	52.2	13.8	11.4	11.9	4.5	40



T-Connector

- NBR sealing



Part no.	for tube	L1	L2	D1	NW	g/piece
878-6600	OD6 1/4"	50.6	26.3	11.4	4.5	40

Illustrations are not binding, subject to change, no liability for errors and misprints - 02.22