

CONNECTORS FOR COOLING WATER

EISELE CONNECTORS FIT & FORGET

Eisele

Member of **HEW** Connector Group

100 % MADE IN GERMANY

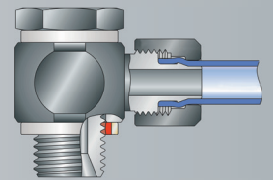
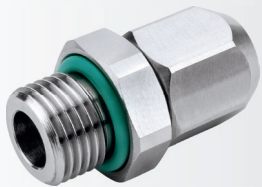
BENEFITS

- ✓ Maximum service life
- ✓ Minimum maintenance
- ✓ High cooling performance
- ✓ Resistance to damage
- ✓ Excellent resistance to temperature changes
- ✓ Excellent corrosion resistance
- ✓ Highest quality

Made of
stainless
steel

SPIGOTS WITH UNION NUT

- Space-saving design
- Efficient connection solution
- Tube holds without additional tube clamp
- Easy installation and removal without tools
- Inexpensive solution
- Graphic selection on the union nut
 - Stainless steel
 - Plastic
 - AL - color anodized

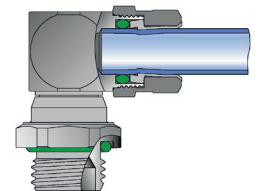


SCREW-IN-FITTINGS WITH FULL NOMINAL DIAMETER

Series 4500 (AISI 316L) | 5500 (EN AW 6082)

The patented screw-in fittings with full nominal diameter fulfil the stringent requirements for tube holding force and are suitable for use with all media.

- Temperature: -20 to 120 °C
- Working pressure: -0.95 to 16 bar
- Media: Cooling water, vacuum and air, other media on request
- Material: Stainless steel 1.4404 | Aluminum EN AW 6082
- Small, compact, user-friendly, non-corrosive and acid-resistant, full flow

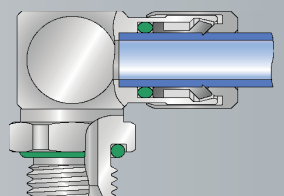
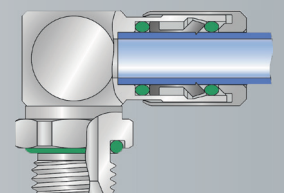
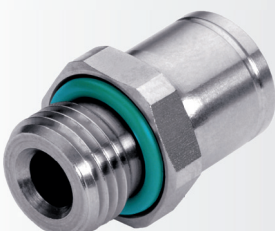


PUSH-IN FITTINGS

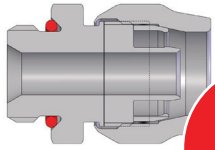
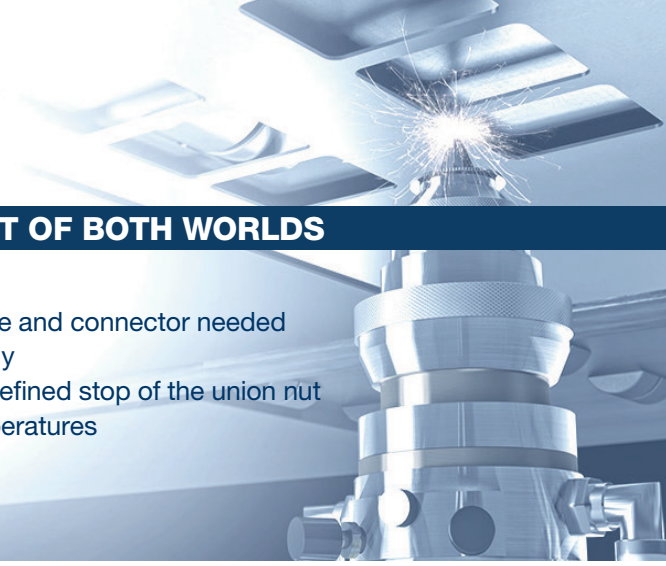
Series 17 | 17A

The robust and dirt-resistant screw-in-fittings that are for ease of use and a long life in demanding ambient conditions

- Temperature: -20 to 120 °C
- Working pressure: -0.95 to 16 bar (to 100 bar)
- Media: Cooling water, vacuum and air, other media on request
- Material: Stainless steel 1.4301 / 1.4307
- Small, compact, user-friendly, full flow
- full nominal diameter



CONNECTORS FOR COOLING WATER



**NEW
INNOVATION**

COMING SOON - THE BEST OF BOTH WORLDS

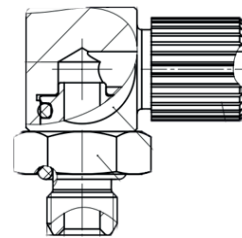
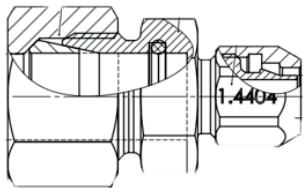
- Captive union nut
- No additional seal between tube and connector needed
- Easy assembly and disassembly
- Secure tube assembly due to defined stop of the union nut
- Specially for high and low temperatures
- Suitable for most liquid media
- Optimized flow
- Strong connection

COSTUMER SOLUTIONS

WE HAVE OVER 2000 SPECIAL ITEMS IMPLEMENTED

For examples:

- Pipe to tube adapter with additional O-ring seal
- Specially small size connections with maximum flow



COOLING WATER TUBES WITH LONG TERM EXPERIENCE FOR THE AUTOMOTIVE AND LASER INDUSTRY

EISELE HYDRO | TRANSLUCENT

- Made of polyether-polyurethane (PU-H)
- Color transparent: natural, red, blue
- External calibration; for use with Eisele plug connectors
- Temperature range -31 to 140 °F (-35 to +60 °C)
- Free of halogen, plasticizers, PWIS
- Impervious to buckling and drag chain compliant
- FDA compliant according to 21 CFR 177.2600
- Suitable for compressed air, water and vacuum



EISELE PROWELD

- Made of polyether-polyurethane
- Color black (red, blue, green, white)
- External calibration; for use with Eisele plug connectors
- Operating temperature: -31 to 194 °F (-35 to +90 °C)
- Suitable for compressed air, water and vacuum
- Free of plasticizers, PWIS, halogen, copper and PTFE
- Impervious to buckling and drag chain compliant
- Resistant to UV, hydrolysis and microbes
- Flame-retardant according to UL94 V0 to V2
- Suitable for employment in welding



POSSIBLE SEALING MATERIALS

- FKM
- EPDM
- HNBR | NBR
- FFKM
- Possible temperature range:
-50°C to 200° C
- FDA, UBA, DVGW- W270 (more on request)

