

SERIES 3000 HYGIENIC CONNECTOR



CHARACTERISTICS

- Available tube sizes: OD6, OD8, OD10
- Thread sizes: G1/8, G1/4, G3/8, M6, M8x1
- Working pressure range: 0 to 145 psi (0 to 10 bar)
- Temperature range: 32 to 266 °F (0 to 130 °C)
- Stainless steel, EPDM/FKM seals
- Recommended Tube: PU (e.g. Eisele ProFood)
- Useable for compressed air applications and cooling water



ADVANTAGES

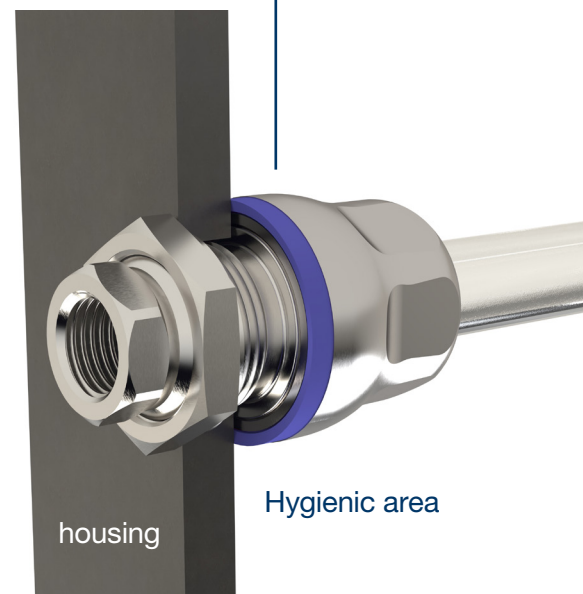
- Hygienic connector with polished surfaces
- Best cleanability
- FDA compliant seals
- Highest flow rate possible
- Easy installation
- Highest German quality



APPLICATION EXAMPLE

- Simple connection from hygienic areas to non-sensitive areas due to hygienic bulkhead connections

Non-sensitive area



housing

Hygienic area

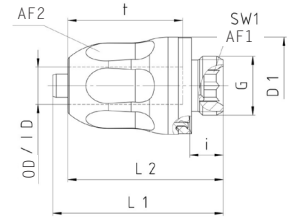


SERIES 3000

3028 | Straight screw-in connector in hygienic design*



- For increased hygienic requirements
- Withworth pipe thread
- Metal sealing edge
- Seals against penetration of dirt in EPDM, blue | FKM, blue
- Sealing for media in HNBR | FKM
- Material stainless steel AISI 304 external parts 316L | internal parts 304
- Temperature range 32 to 266 °F (0 to 130 °C)
- Working pressure range 0 to 145 psi (0 to 10 bar)
- Useable for compressed air applications and cooling water

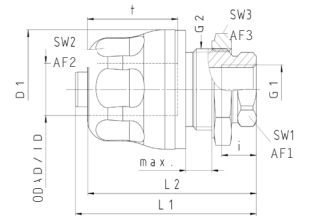


| Part no. | Seal | Thread G | for tube OD/ID | AF1 | AF2 | i | t | L1 | L2 | D1 | ND | g/piece |
|----------------------------------|-------------------------|----------|----------------|-----|-----|-----|------|------|------|------|-----|---------|
| EPP3028-020406 VTF3028-020406 | EPDM (FDA) FKM (FDA) | G1/8 | 6/4 | 5 | 13 | 5.5 | 18.8 | 28 | 25.5 | 15.9 | 3 | 19 |
| EPP3028-045508 VTF3028-045508 | EPDM (FDA) FKM (FDA) | G1/4 | 8/5.5 | 6 | 17 | 7.5 | 19.8 | 31.1 | 27.4 | 18.9 | 4.5 | 32 |
| EPP3028-060710 VTF3028-060710 | EPDM (FDA) FKM (FDA) | G3/8 | 10/7 | 8 | 19 | 7.5 | 20.8 | 32.5 | 29.8 | 23.4 | 6 | 51 |

3080 | Bulkhead connector in hygienic design*



- For increased hygienic requirements
- Seals against penetration of dirt in EPDM, blue | FKM, blue
- Sealing for media in HNBR | FKM
- Material stainless steel AISI 304 external parts 316L | internal parts 304
- Temperature range 32 to 266 °F (0 to 130 °C)
- Working pressure range 0 to 145 psi (0 to 10 bar)
- Useable for compressed air applications and cooling water

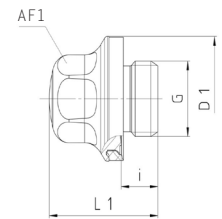


| Part no. | Seal | Thread G1 | Thread G2 | for tube OD/ID | max. | AF1 | AF2 | AF3 | i | t | L1 | L2 | D1 | ND | g/piece |
|----------------------------------|-------------------------|-----------|-----------|----------------|------|-----|-----|-----|---|------|------|------|------|-----|---------|
| EPP3080-450406 VTF3080-450406 | EPDM (FDA) FKM (FDA) | M6 | M10x1 | 6/4 | 6 | 8 | 13 | 12 | 5 | 17 | 34.4 | 31.9 | 15.9 | 3 | 23 |
| EPP3080-515508 VTF3080-515508 | EPDM (FDA) FKM (FDA) | M8x1 | M13x1 | 8/5.5 | 6 | 11 | 17 | 15 | 7 | 17 | 38.3 | 34.6 | 18.9 | 4.5 | 37 |
| EPP3080-010710 VTF3080-010710 | EPDM (FDA) FKM (FDA) | G1/8 | M16x1 | 10/7 | 6 | 13 | 19 | 19 | 8 | 20.8 | 41.5 | 38.8 | 23.4 | 6 | 62 |

3080 | Closure screw in hygienic design



- Withworth pipe thread
- Metal sealing edge
- Seals against penetration of dirt in EPDM, blue | FKM, blue
- Material stainless steel AISI 316L
- Temperature range 32 to 266 °F (0 to 130 °C)
- Working pressure range 0 to 145 psi (0 to 10 bar)
- Useable for compressed air applications and cooling water



| Part no. | Seal | Thread G | AF1 | i | L1 | D1 | g/piece |
|--------------------------|-------------------------|----------|-----|-----|------|------|---------|
| EPP3023-02 VTF3023-02 | EPDM (FDA) FKM (FDA) | G1/8 | 10 | 5.5 | 16.3 | 15.9 | 12 |
| EPP3023-04 VTF3023-04 | EPDM (FDA) FKM (FDA) | G1/4 | 13 | 7.5 | 19.7 | 18.9 | 24 |
| EPP3023-06 VTF3023-06 | EPDM (FDA) FKM (FDA) | G3/8 | 17 | 7.5 | 20.9 | 23.4 | 41 |

*Connection technology also available without spigot with full nominal width

Illustrations not binding, subject to change,
no liability for errors and misprints – 03.24