

**Eisele**

EISELE **MANIFOLD** SOLUTIONS

**E** QUALITY SOLUTIONS  
MADE BY EISELE

**MANIFOLDS**



## EISELE IS QUALITY MADE IN GERMANY

Over 30 patents, more than 5,000 standard articles, and 2,000 customized solutions impressively underline our top quality performance. Whether the solution is configured from standard components or individually customized: all EISELE products boast convincing quality, long lifetimes and sophisticated technology.

Our company is loyal to its philosophy and its roots. Germany is the place where we find our highly qualified employees – the workforce responsible for our company's output. With a manufacturing depth of almost 100%, and stock being kept at the production site itself, we can optimally supply our customers, and respond quickly to fulfill needs and technical specifications. EISELE is part of a global logistics network that guarantees the fast availability of our products on the global market.

DIN EN ISO 9001: 2008 – EISELE has been certified since 1994. We have continuously been updating this quality standard and will continue to maintain it with future certifications. The elements of our basic philosophy include sustainable quality, flexibility and continuous improvement.

Since 2014 Eisele is certified regarding the international economic standard DIN EN ISO 14001:2004.



### From EISELE connection components you may expect:

- + Highest tightness and safety
- + Ruggedness and long lifetimes
- + Vacuum-compatible products
- + Easy mounting and disassembly
- + Special connections for a broad range of applications



## Content overview

Page

Series



### Distributor

5

Solutions for various kinds of application

1900

EISELE MANIFOLDS



### Customised connection solutions

19

Customised connection solutions for the MANIFOLD-Series

CLIENT

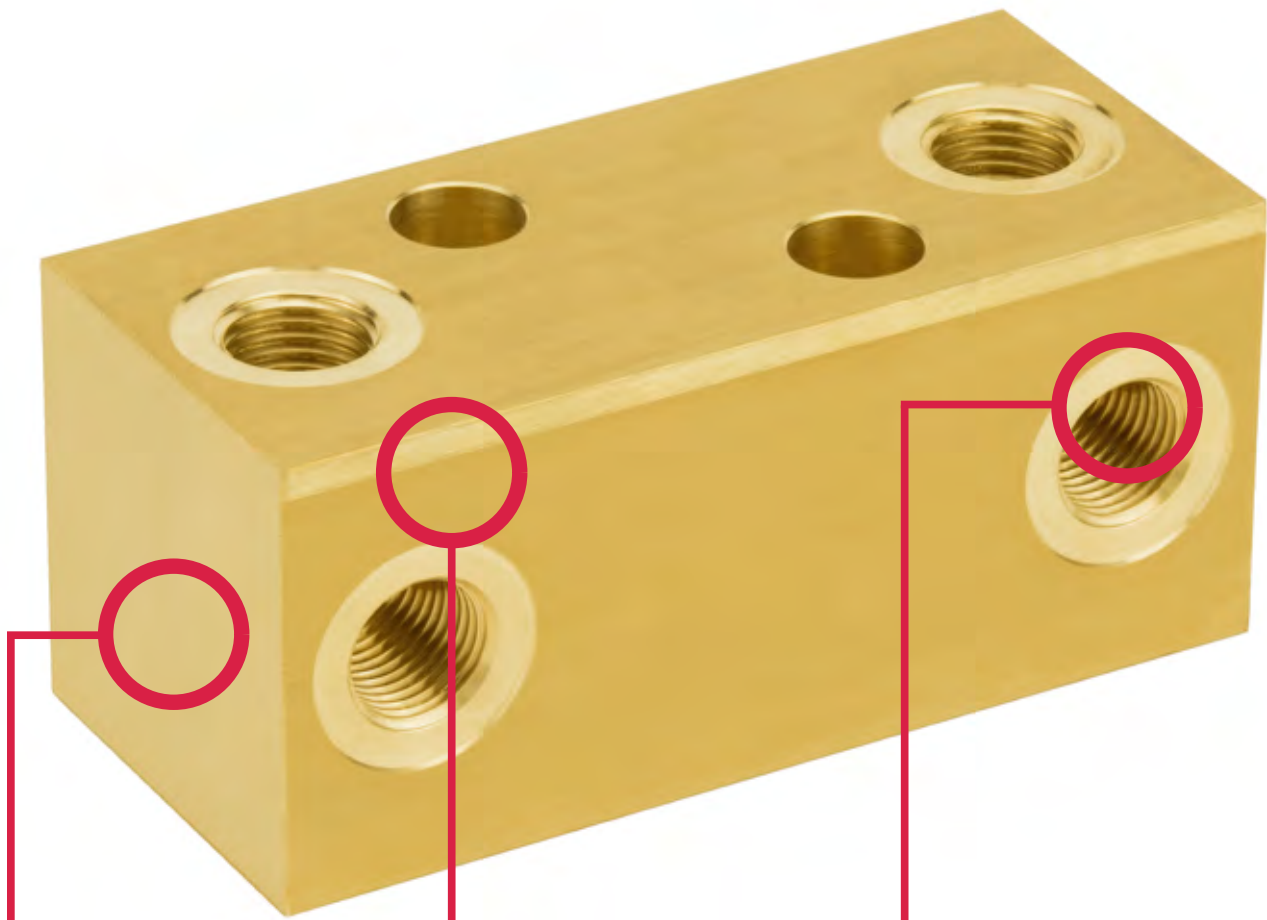
### General terms and conditions

22



## Distributor

1900



#### Wide range of material

- Distributors and connectors made of different materials such as brass, stainless steel, aluminium

#### Assembled distributors

- Maximum cost savings by purchasing equipped distributors

#### Lots of possible combinations

- Non equipped distributors can be combined with almost all of the Eisele connectors
- Distributors are suitable for connectors with chambered O-ring

On request, distributors are available in alternative materials or in combination with alternative connectors.

## Eisele Manifolds

Eisele manifolds complement the various connection systems in the construction of pneumatic controls.

### Service Conditions

1900

- Working pressure: -0,95 to 16 bar
- Allowable Medium: air
- Temperature range: -10 to +70 °C  
(The values indicated are using PVC sealing rings)

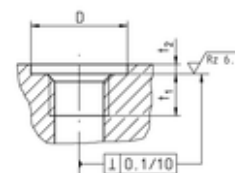
Depending on the material and the connectors, a working pressure up to 100 bar and a temperature range of -20 to +120 °C is possible. Other media are possible, if the materials are stable.

Torque:

- Using cylindrical threads in combination with copper sealing rings (not supplied by Eisele) and not exceeding the maximum recommended tightening torque for cylindrical thread (see table)
- In the case of conical threads using PTFE (Teflon) sealing tape or glue and not exceeding the maximum recommended tightening torque for tapered threads (see table)

### Connection thread, cylindrical

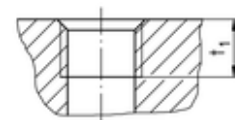
Thread	hex	Thread depth t1 min. (mm)	Counterbore <sup>1)</sup>		Recommended torque <sup>2)</sup>		Thread standards
			ØD min. (mm)	t2 max. (mm)	Kst seal rings Max. (Ncm)	VS seal rings Max. (Ncm)	
M3	5	3	6	0.5	36	-	Metric thread M: DIN 13 / ISO 965
M5	8	4.5	10	0.5	95	150	
G1/8	14	7.5	15	1	900	1100	Pipe thread G: DIN ISO 228
G1/4	17	10.5	19	1.5	1800	2100	
G3/8	19	11	23	1.5	1500	1900	
G3/8	22	11	23	1.5	2500	2800	
G1/2	24	13	27	1.5	2500	3800	
G1/2	27	13	27	2	3400	4800	
G3/4	32	14	33	2	7000	-	
G1	41	14	40	2	11000	-	



<sup>1)</sup> A counterbore is not necessary. However, the indicated values apply if a counterbore is applied.

### Connection thread, conical

Thread	Thread depth t1 min. (mm)	Recommended torque max. (Ncm)	Thread standards
R1/8	7.4	700	Pipe thread ISO 7-1 / EN 10226-1
R1/4	11	1500	
R3/8	11.4	2200	
R1/2	15	4000	
R3/4	16.3	6000	



**Distributor** starting on page 8

Made of aluminium page 8

Made of brass page 12

Made of stainless steel page 14

**Distributor, equipped** starting on page 15

Straight distributor page 15

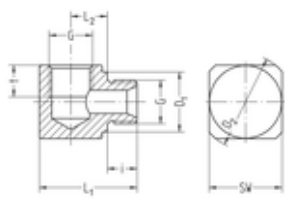
Multiple Y connector page 16

Other Distributors page 16

1900

1900

## Elbow screw-in connector



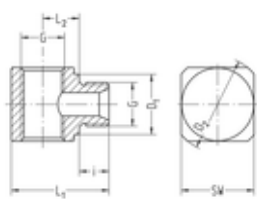
- Whitworth pipe thread and metric thread
- Material Al black anodized / brass blank <sup>1)</sup>
- Temperature range -20 to +100 °C
- Working pressure range -0.95 to 16 bar

Part no.	G	SW	i	L1	L2	D1	D2	t	NW	g/piece Ms	g/piece
85-0102	G1/8	15	6,5	23	9	14	20	8	5	25	8
85-0304	G1/4	22	9	29	11	18	28,5	11	7	65	22
85-0506	G3/8	27	9	32	12,5	22	35	12	10	-	35
85-0708	G1/2	36	11	40,5	15,8	26	46	14	12	-	80
87-4950	<sup>2)</sup> M5	10	4,5	14	5,3	7,5	13	5	2	7	-
87-5354	M10x1	15	6,5	23	9	14	20	8	5	-	8
87-5758	M14x1,5	22	9	29	11	18	28,5	11	7	-	21

<sup>1)</sup> When ordering please add "MS" to Part No.

<sup>2)</sup> Material brass black

## T screw-in piece



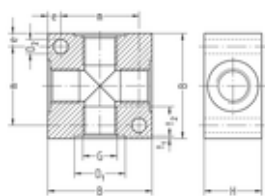
- Whitworth pipe thread and thread M5
- Material Al black anodized / brass <sup>1)</sup>
- Temperature range -20 to +100 °C
- Working pressure range -0.95 to 16 bar

Part no.	G	SW	i	L1	L2	D1	D2	t	NW	g/piece Ms	g/piece
86-0102	G1/8	15	6,5	23	9	14	20		5	23	8
86-0304	G1/4	22	9	29	11	18	28,5		7	59	20
86-0506	G3/8	27	9	32	12,5	22	35		10	-	31
86-0708	G1/2	36	11	40,5	15,8	26	46		12	-	72
88-4950	<sup>2)</sup> M5	10	4,5	14	5,3	7,5	13		2	6	-

<sup>1)</sup> When ordering please add "MS" to Part No.

<sup>2)</sup> Material brass black

## Distributor block



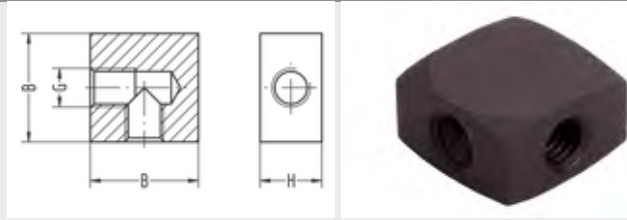
- Whitworth pipe thread and metric thread
- Material Al black anodized
- Temperature range -20 to +100 °C
- Working pressure range -0.95 to 16 bar

Part no.	G	B	H	D1	D2	t1	t2	e	m	g/piece
83-01	G1/8	30	17	15,2	4,5	0,5	8,5	4	22	31
83-03	G1/4	40	22	19,5	5,5	0,5	12,5	5	30	71
83-05	G3/8	45	26	23,5	5,5	0,5	12,5	5	35	101
83-07	G1/2	50	32	27,5	6,5	0,5	14,5	6	38	143
84-53	M10x1	30	17	15,2	4,5	0,5	8,5	4	22	31
84-57	M14x1,5	40	22	20,5	5,5	0,5	12,5	5	30	67
84-65	M22x1,5	50	32	28,5	6,5	0,5	14,5	6	38	136



## Elbow piece

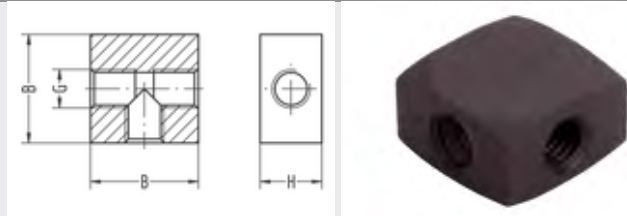
- Material Al black anodized
- Temperature range -20 to +100 °C
- Working pressure range -0.95 to 16 bar



Part no.	G	B	H	g/piece
100-49	M5	14	8	3

## T piece

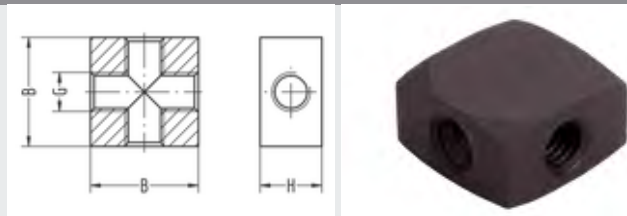
- Material Al black anodized
- Temperature range -20 to +100 °C
- Working pressure range -0.95 to 16 bar



Part no.	G	B	H	g/piece
101-49	M5	14	8	3

## 4-way piece

- Material Al black anodized
- Temperature range -20 to +100 °C
- Working pressure range -0.95 to 16 bar

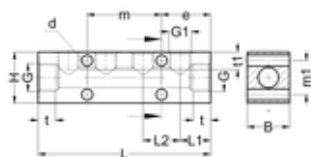


Part no.	G	B	H	g/piece
102-49	M5	14	8	3

1900

1900

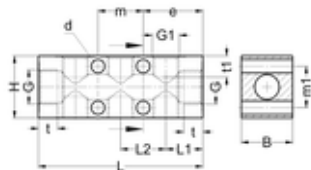
## Distributor, 2 inlets, 1-side



- Whitworth pipe thread, metric thread
- With 3/4/6 outlets
- Material Al anodized
- Temperature range -20 to +100 °C
- Working pressure -0,95 to 16 bar

Part no.	G	G1	B	H	L	L1	L2	d	t	t1	e	m	m1	g/piece
1910-040149	G1/8	4x M5	16	16	62	13	12	2x 4,3	8,5	5	20	22	-	36
1910-030301	G1/4	3x G1/8	20	25	76	16	22	4x 6,5	10	8,5	27	22	17	78
1910-100301	G1/4	10x G1/8	20	25	230	16	22	4x 6,5	10	8,5	27	176	17	255
1910-030503	G3/8	3x G1/4	25	30	80	18	22	4x 6,5	10	10	29	22	20	119
1910-040503	G3/8	4x G1/4	25	30	102	18	22	4x 6,5	10	10	29	44	20	156
1910-060503	G3/8	6x G1/4	25	30	146	18	22	4x 6,5	10	10	51	44	20	227
1910-030705	G1/2	3x G3/8	35	35	104	26	26	4x 6,5	12	10	39	26	25	264
1910-040705	G1/2	4x G3/8	35	35	130	26	26	4x 6,5	12	10	39	52	25	335
1910-060705	G1/2	6x G3/8	35	35	182	26	26	4x 6,5	12	10	65	52	25	477

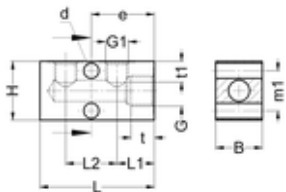
## Distributor, 2 inlets, 2-sides



- Whitworth pipe thread, metric thread
- With 4/6/8/12 outlets
- Material Al anodized
- Temperature range -20 to +100 °C
- Working pressure -0,95 to 16 bar

Part no.	G	G1	B	H	L	L1	L2	d	t	t1	e	m	m1	g/piece
1920-060301	G1/4	6x G1/8	20	25	76	16	22	4x 6,5	10	8,5	27	22	17	73
1920-040503	G3/8	4x G1/4	25	30	58	18	22	2x 6,5	10	10	29	/	20	82
1920-060503	G3/8	6x G1/4	25	30	80	18	22	4x 6,5	10	10	29	22	20	110
1920-120503	G3/8	12x G1/4	25	30	146	18	22	4x 6,5	10	10	51	44	20	208
1920-060705	G1/2	6x G3/8	35	35	104	26	26	4x 6,5	12	10	39	26	25	248
1920-080705	G1/2	8x G3/8	35	35	130	26	26	4x 6,5	12	10	39	52	25	313
1920-120705	G1/2	12x G3/8	35	35	182	26	26	4x 6,5	12	10	65	52	25	442

## Distributor, 1 inlet, 1-side

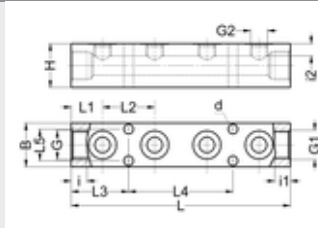


- Whitworth pipe thread
- Material Al anodized
- Temperature range -20 to +100 °C
- Working pressure range -0.95 to 16 bar

Part no.	G	G1	B	H	L	L1	L2	d	t	t1	e	m	m1	g/piece
1930-020301	G1/4	2x G1/8	20	25	49	16	22	2x 6,5	10	10	27	-	17	52
1930-060705	G1/2	6x G3/8	35	35	171	26	26	4x 6,5	12	12	54	52	54	434

## Distributor

- Whitworth pipe thread
- Material Al anodized
- Temperature range -20 to +100 °C
- Working pressure range -0,95 to 16 bar

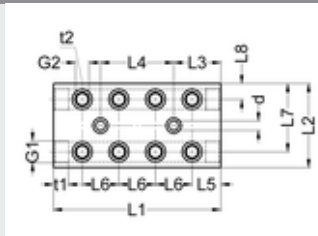


1900

Part no.	G	G1	G2	i	i1	i2	L	L1	L2	L3	L4	L5	d	B	H	NW	g/piece
SA1697-0405011	G3/8	G3/8	4x G1/8	9	9	8,5	126	18	30	33	60	18	5,5	25	25	6,5	170

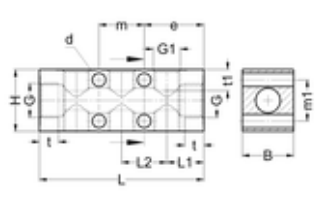
## Distributor block

- Whitworth pipe thread
- Material Al anodized
- Temperature range -20 to +100 °C
- Working pressure range -0.95 to 16 bar



Part no.	G1	G2	L1	L2	L3	L4	L5	L6	L7	L8	d	t1	t2	g/piece
SA832/1	G1/2	G1/4	160	80	45	70	27,5	35	15	65	9	14,2	12,5	1094

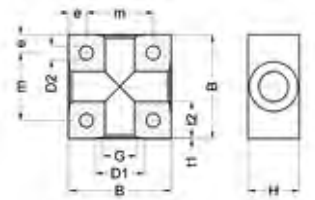
## Distributor, 2 inlets, 2-sides



- Whitworth pipe thread
- Material brass blank
- Temperature range -20 to +100 °C
- Working pressure range -0.95 to 16 bar

Part no.	G	G1	B	H	L	L1	L2	d	t	t1	e	m	m1	g/piece
1920-060705MS	G1/2	6x G3/8	35	35	104	26	26	4x 6,5	12	10	39	26	25	248

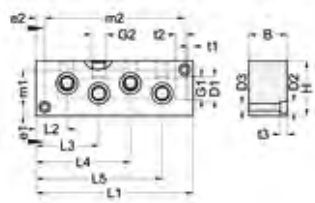
## Distributor block



- 4x Whitworth pipe thread
- Material brass blank
- Temperature range -20 to +100 °C
- Working pressure range -0.95 to 16 bar

Part no.	G	D1	D2	e	H	m	B	t1	t2	g/piece
SA1302-03	G1/4	19,5	5,3	7	20	26	40	0,3	14	451
SA1302-07	G1/2	27,5	5,3	8	32	34	50	0,3	17	451

## Distributor block

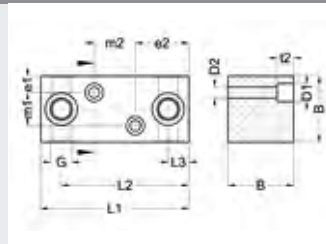


- Outlet: 8 x Whitworth pipe thread G1/4
- Input: Whitworth pipe thread G1/2
- Material brass blank
- Temperature range -20 to +100 °C
- Working pressure range -0.95 to 16 bar

Part no.	G1	G2	D1	D2	e1	e2	L1	L2	L3	L4	L5	H	m1	m2	B	t1	t2	t3	g/piece
SA1303-0307	G1/2	G1/4	22	10,4	8	8	144	28,5	57,5	86,5	115,5	50	34	128	30	5	15	6,2	1714

## Distributor block

- Outlet: 4x Whitworth pipe thread
- Input: 2 x Whitworth pipe thread
- Material brass blank
- Temperature range -20 to +100 °C
- Working pressure range -0.95 to 16 bar

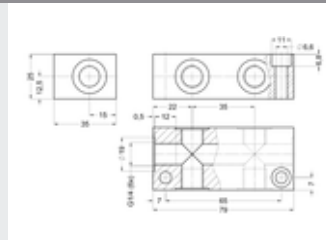


1900

Part no.	G	D1	D2	e1	e2	m1	m2	L1	L2	L3	B	t2	g/piece
SA1304-03	G1/4	11	6,6	10	32,5	20	25	90	77,5	12,5	40	10	1090
SA1304-05	G3/8	14	9	10	37,5	25	25	100	87,5	12,5	45	10	1470
SA1304-07	G1/2	14	9	10	42,5	30	25	110	92,5	17,5	50	10	1941

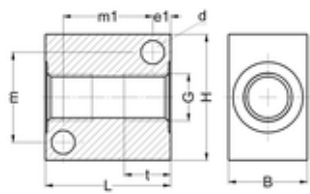
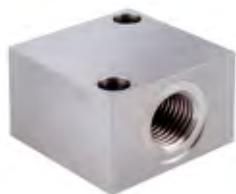
## Distributor block 6-connections

- 6 x Whitworth pipe thread G1/4
- Material brass blank
- Temperature range -20 to +100°C
- Working pressure range -0.95 to 16 bar



Part no.	g/piece
SA829	433

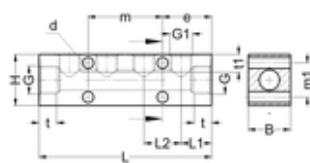
## Distributor block



- Whitworth pipe thread
- Material 1.4305
- Temperature range -20 to +120 °C
- Working pressure range -0.95 to 16 bar

Part no.	G	B	H	L	d	t	e1	m	m1	g/piece
SA1675-03	G1/4	22	35	35	2x 6,5	12,5	5	25	25	167

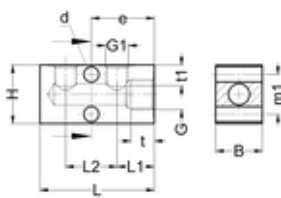
## Distributor, 2 inlets, 1-side



- Whitworth pipe thread, metric thread
- With 3/4/6 outlets
- Material 1.4301/ 1.4307
- Temperature range -20 to +120 °C
- Working pressure -0,95 to 16 bar

Part no.	G	G1	B	H	L	L1	L2	d	t	t1	e	m	m1	g/piece
1917-040149	G1/8	4x M5	16	16	62	13	12	2x 4,3	8,5	5	20	22	-	101
1917-030301	G1/4	3x G1/8	20	25	76	16	22	4x 6,5	10	8,5	27	22	17	218
1917-030503	G3/8	3x G1/4	25	30	80	18	22	4x 6,5	10	10	29	22	20	333
1917-040503	G3/8	4x G1/4	25	30	102	18	22	4x 6,5	10	10	29	44	20	437
1917-060503	G3/8	6x G1/4	25	30	146	18	22	4x 6,5	10	10	51	44	20	636
1917-030705	G1/2	3x G3/8	35	35	104	26	26	4x 6,5	12	10	39	26	25	739
1917-040705	G1/2	4x G3/8	35	35	130	26	26	4x 6,5	12	10	39	52	25	938
1917-060705	G1/2	6x G3/8	35	35	182	26	26	4x 6,5	12	10	65	52	25	1336

## Distributor, 1 inlet, 1-side

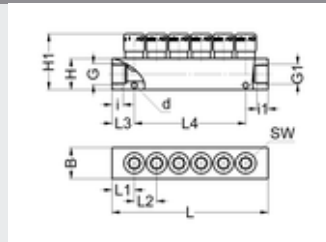


- Whitworth pipe thread
- Material 1.4301/1.4307
- Temperature range -20 to +100 °C
- Working pressure range -0.95 to 16 bar

Part no.	G	G1	B	H	L	L1	L2	d	t	t1	e	m	m1	g/piece
1937-020301	G1/4	2x G1/8	20	25	49	16	22	2x 6,5	10	10	27	-	17	52

### Distributor, equipped

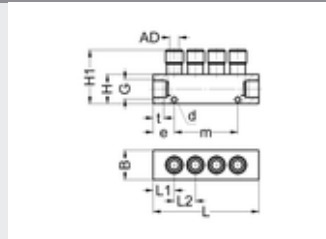
- Whitworth pipe thread
- Sealing NBR
- Equipped with connectors
- Distributor Al anodized
- Connectors brass/ brass nickel-plated
- Temperature range -10 to +70 °C
- Working pressure range -0,95 to 16 bar



Part no.	G	G1	for tube	SW	i	i1	L	L1	L2	L3	L4	d	B	H	H1	g/piece
SA1615-040506	G3/8	G3/8	4x OD8	6	9	9	90	18	18	18	54	4,5	25	25	42,5	160
SA1615-040508	G3/8	G3/8	4x OD10	8	9	9	90	18	18	18	54	4,5	25	25	44,5	172
SA1615-060506	G3/8	G3/8	6x OD8	6	9	9	126	18	18	18	90	4,5	25	25	42,5	230
SA1615-060508	G3/8	G3/8	6x OD10	8	9	9	126	18	18	18	90	4,5	25	25	44,5	249

### Distributor equipped, connectors with 2 seals

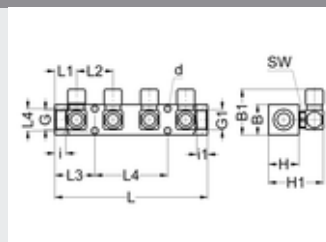
- Whitworth pipe thread
- Sealing FPM
- Equipped with connectors (2 seal version)
- Distributor Al anodized
- Connectors brass/ brass nickel-plated
- Temperature range -20 to +120 °C
- Working pressure range -0,95 to 24 bar



Part no.	G	for tube	L	L1	L2	d	B	H	H1	t	e	m	g/piece
SA1692-040506	G3/8	4x OD8	90	18	18	2x 4,5	25	25	45	9	18	54	171

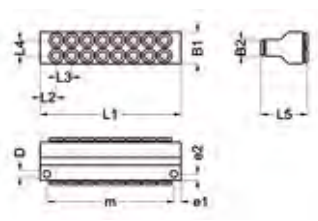
### Distributor, equipped, 90°

- Whitworth pipe thread
- Sealing NBR
- Equipped with connectors
- Distributor Al anodized
- Connectors brass/ brass nickel-plated
- Temperature range -10 to +70 °C
- Working pressure range -0,95 to 16 bar



Part no.	G	G1	for tube	SW	i	i1	L	L1	L2	L3	L4	d	B	B1	H	H1	NW	g/piece
SA1697-040506	G3/8	G3/8	4x OD8	14	9	9	126	18	30	33	60	5,5	25	37,5	25	45,2	6,5	323

Multiple-Y-connector air

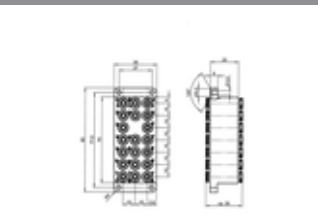


- Plug connectors Program 15
- FPM seals
- Material brass nickel-plated
- Temperature range -20 to +120 °C
- Working pressure range -0.95 to 16 bar

1900

Part no.	Design	for tube	L1	L2	L3	L4	L5	D	m	e1	e2	B1	B2	NW	g/piece
VT1900-0802	8-fold	OD4	89	13	9	9	32	5,5	78	5,5	5	20	10	2,5	325
VT1900-0804	8-fold	OD6	112	13	12,3	12,3	37	5,5	101	5,5	5	25	13	4	588
VT1900-0806	8-fold	OD8	135	15	15	15	47	5,5	124	5,5	5	30	18	6	1077
VT1900-1402	14-fold	OD4	143	13	9	9	32	5,5	132	5,5	5	20	10	2,5	523
VT1900-1404	14-fold	OD6	186	13,1	12,3	12,3	37	5,5	175	5,5	5	25	13	4	974
VT1900-1406	14-fold	OD8	225	15	15	15	47	5,5	214	5,5	5	30	18	6	1784
VT1900-2002	20-fold	OD4	197	13	9	9	32	5,5	186	5,5	5	20	10	2,5	721
VT1900-2004	20-fold	OD6	259,7	13	12,3	12,3	37	5,5	248,7	5,5	5	25	13	4	1359
VT1900-2006	20-fold	OD8	315	15	15	15	47	5,5	304	5,5	5	30	18	6	2491

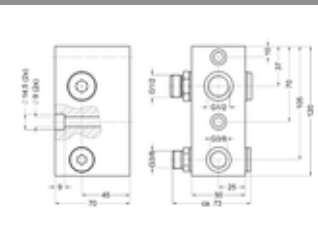
Distributor



- 40 connections for outer diameter of the hose 4
- Material: Al natural anodized, brass nickel plated
- Sealings NBR (Perbunan)
- Temperature range: -20 to +80 °C
- Working pressure: -0,95 to 16 bar
- Nominal width 3
- Weight: 185 g

Part no.	g/piece
SA1468	

Distributor block 6-connections



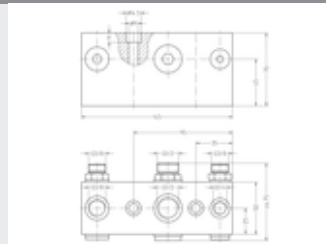
- Whitworth pipe thread
- Distributor block Al blank
- Screw-in parts brass blank
- Temperature range -10 to +70°C
- Working pressure range -0.95 to 16 bar

Part no.	g/piece
SA1031	1060



## Distributor block 9-connections

- Whitworth pipe thread
- Distributor block Al blank
- Screw-in parts brass blank
- Temperature range -10 to +70°C
- Working pressure range -0.95 to 16 bar

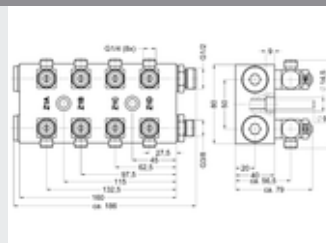


1900

Part no.	g/piece
SA834	1485

## Distributor

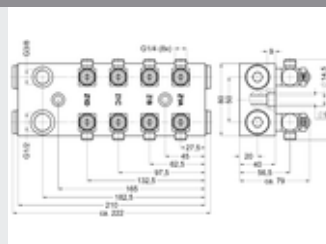
- Whitworth pipe thread
- Equipped with 8 inlet-side throttles
- Distributor block Al blank
- Screw-in parts brass nickel-plated or brass blank
- Temperature range -10 to +70°C
- Working pressure range -0.95 to 16 bar



Part no.	g/piece
SA832	1985

## Distributor

- Whitworth pipe thread
- Equipped with 8 inlet-side throttles
- 8 swivel unions SA831 enclosed
- Distributor block Al blank
- Screw-in parts brass nickel-plated or brass blank
- Temperature range -10 to +70°C
- Working pressure range -0.95 to 16 bar



Part no.	g/piece
SA836	2320



## Customised connection solutions



Manifold suit to the clients requirements

CLIENT

## We master your individual specifications

- combination of the different connection and screw joint series
- individual types, e.g. extensions, arches
- special threaded connections, e.g. female thread, fine thread, NPT
- adaption other systems, e.g. pipe screw joints, copper profiles, fabric lining hoses
- other sealing materials available, e.g. NBR, EPDM, FFKM
- integrated valve technology, e.g. flow control, barriers, pressure reading
- colour coding
- pre-assembled structural components
- multiple couplings

## Customised connection solutions

### Distributor, equipped



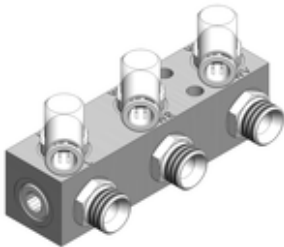
Distributor designed after customer specification for pneumatics.

### Distributor, equipped



Distributor designed after automotive specifications.

### Distributor, equipped



Distributor designed after automotive specifications.

### Distributor, equipped



Multiple media distributor for fluids and compressed air.

### Distributor, equipped



Individually equipped block after customer specifications.

CLIENT

EISELE CLIENTLINE

## Customised connection solutions

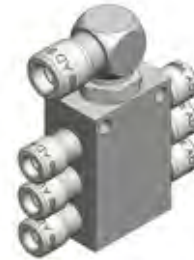
### Distributor, equipped

Distributor designed after automotive specifications.



### Distributor, equipped

Distributor made of 1.4305, equipped with stainless steel fittings.



CLIENT

## § 1 General

(1) These conditions of sale shall apply to agreements that are concluded between Eisele Pneumatics GmbH & Co. KG, Waiblingen (hereinafter “Eisele”) and its business customers (hereinafter “Customer”), insofar as these conditions of sale are validly incorporated. General terms and conditions of the Customer that contradict or deviate from these conditions of sale shall not form part of the agreement unless Eisele expressly consents in writing to the application of such general terms and conditions. These conditions of sale shall also apply if we unconditionally perform deliveries to the Customer while being aware of general terms and conditions of the Customer that contradict or deviate from these conditions of sale.

(2) Any arrangements reached between Eisele and the Customer with respect to an agreement shall be in writing. If the Customer does not agree with the application of these conditions of sale, it shall notify Eisele hereof without undue delay.

(3) These conditions of sale shall only apply vis-à-vis entrepreneurs within the meaning of sec. 310(1) German Civil Code. Within the scope of ongoing business relations our conditions of sale shall also apply to future deliveries and services unless they are expressly agreed on anew.

## § 2 Offers; order acceptance

(1) Unless the offer expressly provides otherwise, the offers from Eisele shall be without obligation and exclusively understood as an invitation to submit an offer. Any agreements between Eisele and the Customer shall require written order confirmation by Eisele vis-à-vis the Customer.

(2) Descriptions and price information in catalogs, price lists, circulars, brochures or the like shall not be binding and shall merely serve to provide general information to prospective customers about the services offered by Eisele, unless we expressly confirmed this information when concluding an agreement. This also applies, in particular, to illustrations as well as to details regarding the size and weight of our products and services.

## § 3 Delivery periods, partial deliveries

(1) Any agreed delivery period shall begin, unless otherwise specified, on the day on which the order confirmation is received by the Customer.

(2) Eisele’s compliance with the delivery obligation requires the timely and proper fulfillment of the Customer’s cooperation obligations. Eisele reserves the right to plead non-performance.

(3) Eisele shall have the right to withhold delivery from the Customer if Eisele has a payable claim against the Customer.

(4) Eisele shall have the right to make partial deliveries to an extent that is reasonable for the Customer.

(5) Unforeseeable events of force majeure such as, in particular, war, riot, strike, lockout, measures by public authorities and resulting limitations of the capacity of pre-suppliers shall release Eisele from its delivery obligation for the duration of such events and for an additional two weeks. Should any of the aforementioned events last more than 6 weeks, both parties shall have the right to rescind the agreement if it becomes unreasonable for Eisele to render services.

## § 4 Transport, shipping, insurance

Shipments shall be made ex works from the Waiblingen site (Incoterms 2010). Should this be deviated from, the customer shall nevertheless bear the risk associated with the delivery unless expressly otherwise specified.

## § 5 Price

Prices shall be set in euros.

## § 6 Payments

(1) Invoices shall become payable immediately following receipt of the goods without a cash discount deduction, unless otherwise explicitly agreed.

(2) If Eisele accepts payment by bill of exchange, this shall be done on account of performance only. All bill of exchange expenses shall be borne by the Customer; it shall not be entitled to a cash discount deduction.

(3) As long as the Customer is not merely in arrears by an insignificant amount, Eisele can make the performance of services to be rendered contingent on prepayment by the Customer. Should the prepayment not be made within a reasonable time limit, Eisele shall have the right to cancel all orders not yet filled if the consideration has not been paid by the customer by the time at which the time limit expires.

## § 7 Reservation of title

(1) Eisele reserves title to the goods until all of Eisele’s claims against the Customer that have already arisen have been paid in full. In this connection the legal grounds on which Eisele’s claims against the Customer are based are irrelevant. This also includes, in particular, balance claims from current account. Claims for which a bill of exchange is negotiated or a check is issued to Eisele shall not be deemed satisfied until the bill of exchange or check is paid or cashed.

(2) The Customer shall, without undue delay, inform Eisele in writing of intervention by third parties such as, for example, attachment or execution by means of which rights of Eisele (in particular, Eisele’s reservation of title) are impaired.

(3) If the third party is not able to reimburse Eisele for the in-court and out-of-court costs of an action pursuant to sec. 771 German Code of Civil Procedure, the Customer shall be liable for the resulting shortfall.

(4) The processing or alteration of goods by the Customer shall always be carried out on behalf of Eisele. If the product is processed with other objects not belonging to Eisele, Eisele shall acquire joint ownership of the new thing based on the ratio of the value of the goods to the other processed items at the time of the processing. Otherwise, the thing arising from the processing shall be subject to the same provisions as the goods for which title is reserved.

(5) The Customer may resell the reserved goods only within the scope of its regular business operations. It shall be entitled and authorized to resell the reserved goods provided that the claims it accrues against its purchasers or third parties due to the resale, transfer to Eisele. The claims of the Customer arising from the resale of the reserved goods are now assigned to Eisele. Eisele accepts such assignment. The Customer shall not be entitled to otherwise dispose of the reserved goods; in particular, it may not pledge or assign the reserved goods by way of security. The Customer’s right to sell the reserved goods shall expire in the event of a considerable worsening of the Customer’s financial situation (insolvency, threatening insolvency, opening of insolvency proceedings) if the Customer ceases making payments from the proceeds collected and/or gets into arrears.

(6) The Customer shall be authorized to collect the assigned claims until revocation by Eisele. Eisele shall have the right to revoke the collection authorization at any time. The Customer shall not have the right to assign the claim to third parties. Eisele shall not make any use of the right of revocation as long as the Customer duly complies with its payment obligations. At Eisele’s request, the Customer shall inform its purchasers of the assignment to Eisele and provide Eisele with the necessary information and documents for collecting the claim. With respect to the expiry of the Customer’s collection authorization, para. 5 shall apply mutatis mutandis.

(7) Eisele undertakes, upon the Customer’s request, to release the security to which it is entitled in accordance with the above

provisions insofar as its realizable value exceeds the claims to be secured by more than 10%. Eisele shall have the right to decide which security is released.

## § 8 Rights

Eisele shall reserve its copyrights in illustrations, drawings, calculations, drafts and other documents that were prepared by Eisele. This shall apply, in particular, to written documents that are designated as "confidential". The Customer must receive Eisele's express written consent before passing on such documents to third parties.

## § 9 Guarantee, inspection

(1) Insignificant discrepancies, in particular technical improvements or product enhancements, shall not constitute defects within the meaning of sec. 434 German Civil Code.

(2) Furthermore, it shall not constitute a defect where the products are not free from anti-wetting substances, in particular silicone or light lubrication. Although the products are silicone-free when they leave production, it cannot be guaranteed that the products will be absolutely free from silicone or entirely free from other anti-wetting substances, since Eisele's suppliers (packaging suppliers) cannot issue any corresponding guarantees.

(3) The goods delivered within the scope of commercial transactions shall be inspected by the Customer without undue delay and, if a defect is detected, this shall be notified in writing, without undue delay, no later than within two weeks after receiving the goods (patent defect) or after discovery of the defect (latent defect).

(4) If it can be demonstrated that the goods have a defect at the time of the transfer of risk, the Customer can demand subsequent performance. Eisele can decide whether to repair or replace the defective goods. The Customer shall have the right to a reduction or to rescind the agreement if subsequent performance fails. This is the case if two replacement deliveries were also defective or two repair attempts were unsuccessful. Should goods that are allegedly defective, but actually fault-free, be returned, Eisele shall be at liberty to charge the Customer a reasonable amount to cover expenses incurred by Eisele in this connection, in particular for the repeated inspection of the goods.

(5) Warranty claims of the Customer based on defects shall become statute-barred 12 months after delivery of the goods. This shall not apply with respect to items that, due to their customary manner of use, were used for a building and caused the defectiveness of that building; in this case the claim shall only become statute-barred after five years. There shall be no warranty claim for downgraded goods, special items, waste and goods that are not new. There shall be no claims to reduction or the exercise of a right of rescission if the claim to subsequent performance has become statute-barred.

## § 10 Liability

(1) Eisele shall not be liable for direct or indirect damage (for example, due to an operational interruption or lost profits of the Customer), irrespective of the legal grounds therefor.

(2) The above exclusion of liability shall not apply:

- (i) in the event of willful or grossly negligent breaches of duty by the governing bodies, employees or vicarious agents of Eisele;
- (ii) in the event of an injury to life, limb or health;
- (iii) in the event of a breach of material contractual duties. In the latter case, liability of Eisele shall, however, be limited to damage typically foreseeable upon conclusion of the agreement. For damage that could not be foreseen by Eisele, liability shall be limited to the value of the order.

(3) The above restrictions and limitations shall not be applied to liability provisions that are required by law, such as, for example, those of the Product Liability Act.

## § 11 Final provisions, applicable law, jurisdiction

(1) Agreements between Eisele and the Customer shall be exclusively governed by German law to the exclusion of the United Nations Convention on Contracts for the International Sale of Goods (CISG) and private international law.

(2) Waiblingen shall be the sole place of jurisdiction for all disputes arising from or in connection with the business relations between Eisele and the Customer, provided that the Customer is a dealer. The place of jurisdiction shall also apply to actions pertaining to checks or bills of exchange.

(3) Should a provision of these conditions of sale be or become invalid or impracticable, this shall not affect the validity of the remaining conditions of sale. Eisele and the Customer undertake, in such a case, to replace the invalid or impractical provision with a valid or practicable provision that comes as close as possible to the spirit and purpose of the provision to be replaced.

(4) Should these conditions of sale contain an unintended omission, this shall be filled with a provision that Eisele and the Customer would have agreed on had they considered the need for a provision governing the respective issue.

Waiblingen, August 2011

\* \* \*



Eisele Pneumatics GmbH & Co. KG  
Qualitäts-Anschlusskomponenten  
für Druckluft, Gase und Flüssigkeiten  
Quality connection components for  
compressed air, gases and liquids

Hermann-Hess-Str. 14-16  
71332 Waiblingen | Germany

Telephone +49 (0) 7151-1719-0  
Fax +49 (0) 7151-1719-17

info@eisele.eu  
www.eisele.eu

## QUALITY CONNECTION COMPONENTS FOR COMPRESSED AIR, GASES, AND LIQUIDS



BASIC



INOX

EISELE **INOXLINE**  
Stainless steel connection  
solutions



LIQUID

EISELE **LIQUIDLINE**  
Connections for cooling water



MULTI

EISELE **MULTILINE**  
Multiple couplings for multiple  
media connections